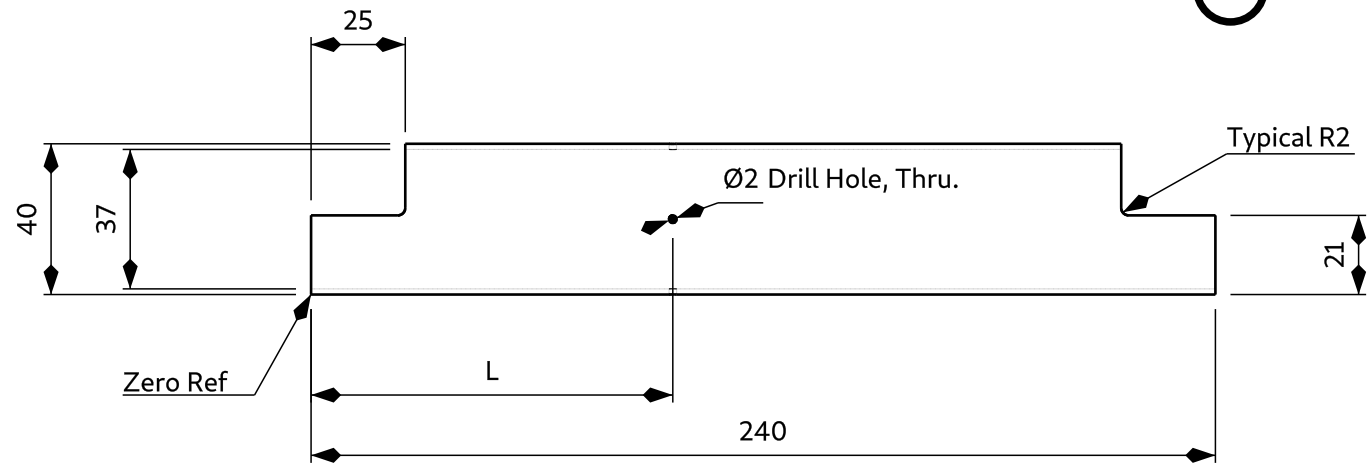
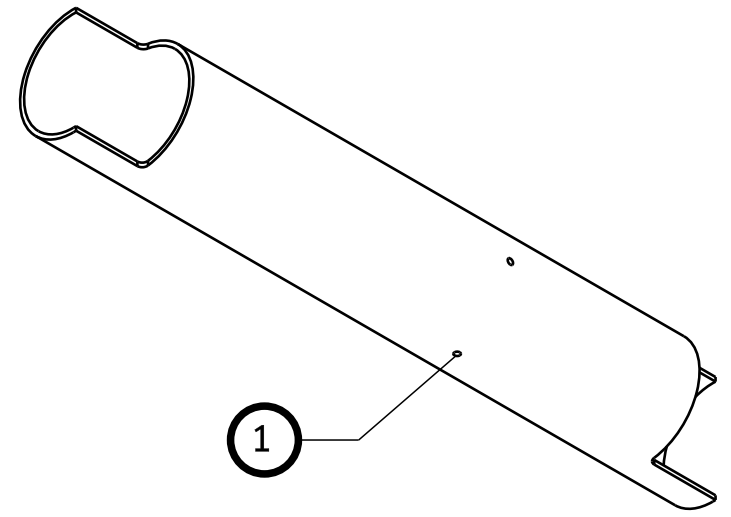


F E D C B A

VARIANT	L
-1	96
-3	40



Notes:

1. Stock Material: 6063 Aluminum Tube OD40.0 TH1.5
2. In order to drill holes (1), use part C1021-1
 - 2.a Aling the side of C1021-1 with Zero Ref and move it L-7.5 and drill the hole
 - 2.b Remove C1021-1 from C1001-variant and put one M3 nut with M3 L10 DIN914 set screw in order to lock the C1021-1 to the previous position (look A1020-1)
- ! Zero Ref side and one side of C1021-1 must parallel to each other
- 2.c Drill the other 3 holes which are in the same diameter and 90deg offset
3. In variant -3, this proces (cut) is done only in one side, not in Zero Ref

DESIGNED BY: Azisi		C1001			
DATE: 19/08/2018		Symmetric and Asymmetric Shaft			
SIZE A4		UNLESS OTHERWISE SPECIFIED TOLERANCES		DIMENSIONS ARE IN MILLIMETERS DO NOT SCALE	
SCALE 1:2		DIN ISO 2768- mk		DEBURR AND BREAK SHARP EDGES ±0.2	
WEIGHT (kg) N/A	ROUGHNESS -	SHEET 1/1	REV B	MATERIAL NOTES	

This drawing is Licensed under the CERN OHLv1.2.

F E D